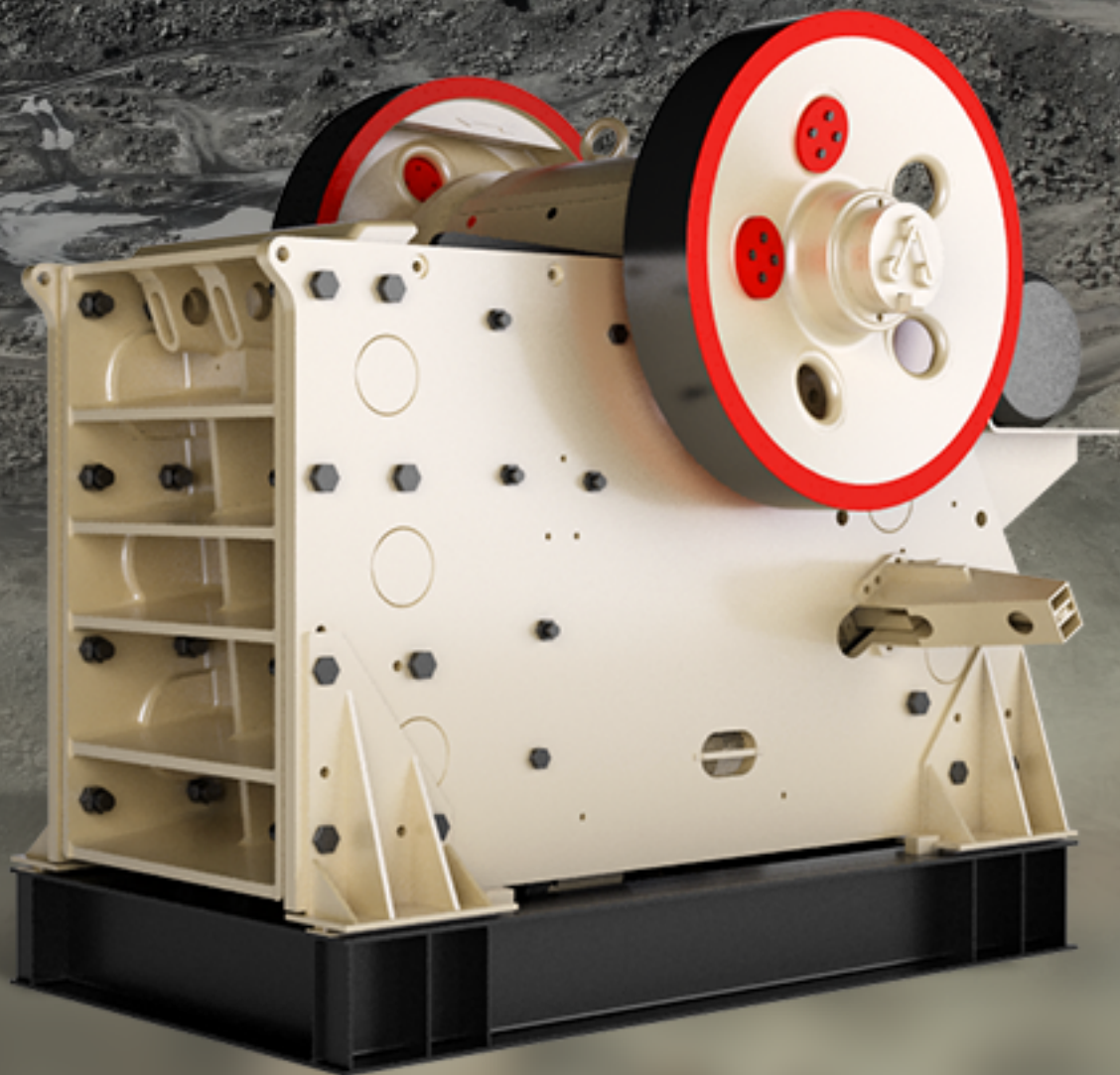




# JAW CRUSHERS FOR **ALL YOUR** NEEDS



# Contents

<b>I .Forty years of Production Experiences</b>	03
<b>II .Structure</b>	04
<b>III.CJ Series of Euro Jaw Crusher</b>	05
<b>IV.CJ Series of Euro Jaw Crusher parameters</b>	06
<b>V.German Type Jaw Crusher</b>	07
<b>VI.German Type Jaw Crusher parameters</b>	08
<b>VII.PE Jaw crusher performance</b>	09
<b>VIII.PE Jaw Crusher parameters</b>	10
<b>IX.Wotetrack Jaw crusher station performance</b>	11
<b>X.Wotetrack jaw crusher station parameters</b>	12
<b>XI.How to Install A Crusher</b>	13
<b>XII.Preparations before start</b>	14
<b>XIII.How to Start A Crusher</b>	15
<b>XIV.Maintenance and usage</b>	16
<b>XV.Jaw crusher bearing lubrication</b>	17
<b>XVI.Company strength</b>	18

# Forty Years of Production Experiences



Henan Fote Mining Machinery Co., Ltd. is a joint-stock mining machinery enterprise integrated in scientific research, production and marketing, which mainly produces heavy-duty mining machines. The advanced technologies have been introduced from America, Germany, Japan and Australia.

The international advanced production line, first-class modern testing base and research centers of sand making, powder grinding, ore beneficiation and building material equipment are established.

The enterprise has

- Scientific management
- Excellent manufacturing technologies
- Creative manufacturing ideas
- Rapidly developed into high-end production and export base.

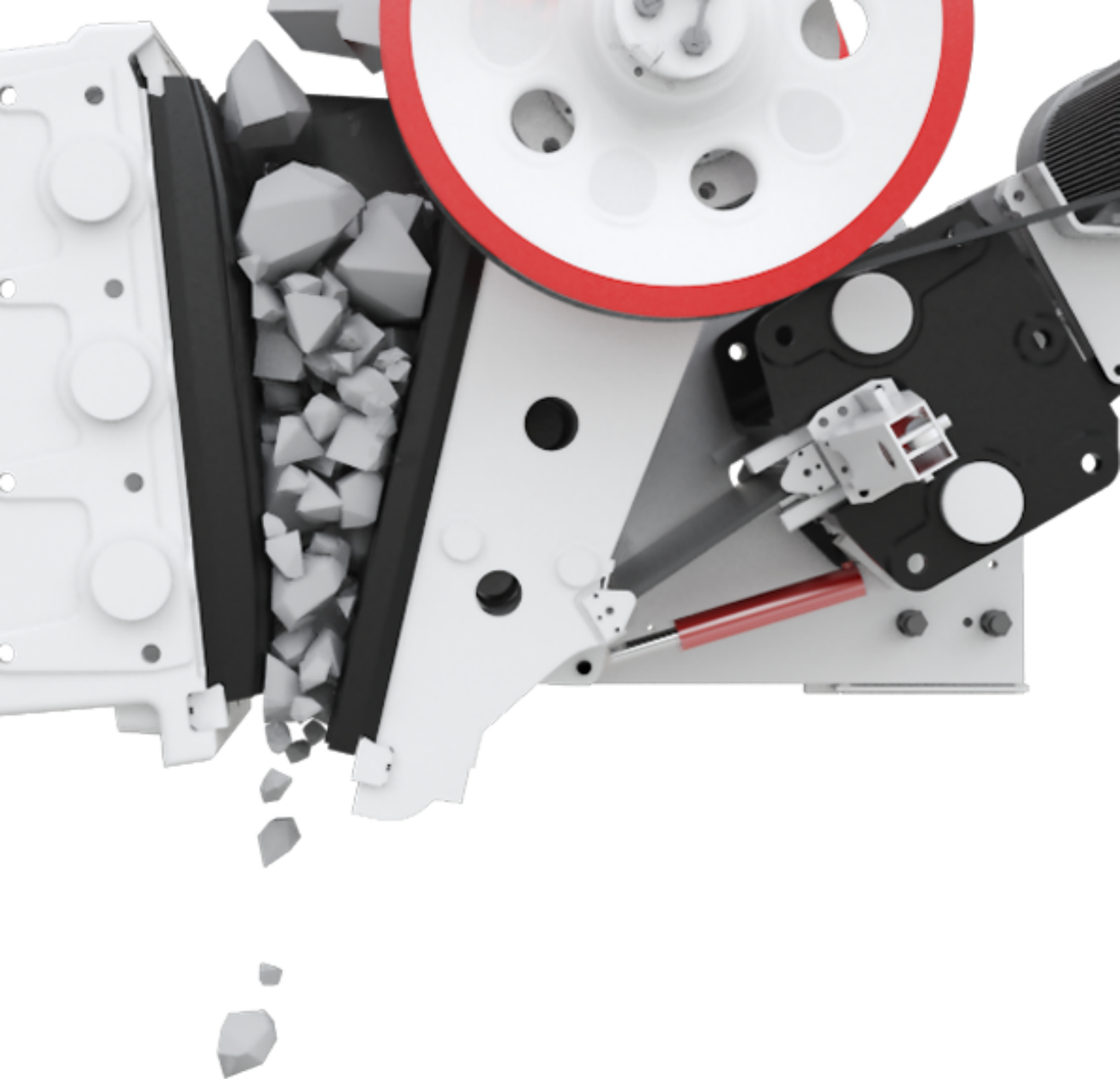
**The enterprise covers an area of over 350,000 m<sup>2</sup>**

**Standardized heavy-duty industrial plants of 260,000 m<sup>2</sup>**

**More than 600 large and medium-sized equipment**

**More than 2,300 employees, including more than 360 high-tech talents**





The equipment consists of bracket, movable jaw, eccentric shaft, jaw plate, toggle plate, etc.  
Eccentric shaft is driven to rotate by motor and jaw runs on adjusted track to crush materials in the crushing chamber.

# STRUCTURE

## JAW CRUSHER



## CJ Series of Euro Jaw Crusher

**I .** The new toothed guard plate is used to increase efficiency and productivity.

**II.** The final product has a uniform particle size, good grain shape, and higher economic value.

**III.** With the excellent motion parameters, the design of the main components is more precise, and the crushing effect is better.

**IV.** The bearing specifications are larger, the bearing capacity is higher, the crushing force is larger, and the waste generated from the crushing process is less.



# CJ SERIES OF EURO JAW CRUSHER

## PARAMETERS

Model	Feed Opening Size L×W (mm)	Max. Feeding size (mm)	Range of discharging port (mm)	Handling capacity(t/h)	Power (kw)
CJ96	930×580	480	60-175	120-450	90
CJ106	1060×700	560	70-200	155-580	110
CJ125	1250×950	760	100-250	290-840	160
CJ150	1400×1200	960	125-250	340-950	200
CJ160	1600×1200	960	150-300	430-1260	250
CJ200	2000×1500	1200	175-300	760-1590	400
CJ1511	1500×1070	850	125-300	385-1080	200
CJ1513	1500×1300	1040	150-300	480-1160	200





## German Type Jaw Crusher

### **More Crushing Power**

The use of oversized bearings and forged spindles provides greater crushing force.

### **High Quality, High Productivity**

Compared with other crushers, the HD German version jaw crusher has a larger crushing stroke, higher productivity and greater load carrying capacity, which can increase the output by 30%-50%.

### **Low Failure Rate and Easy Maintenance**

Reliable performance, high wear-resistant toothed plate, long maintenance period, and cost-saving.

### **Wide Application and Strong Applicability**

Compared with the other jaw crushers of the same specification, the German Type Jaw Crusher has simple and reasonable structure with less space.

# CJ SERIES OF EURO JAW CRUSHER

## PARAMETERS

Model	HD72 (57)	HD86 (69)	HD98 (751)	HD110 (912)	HD125
Feed Opening Size(mm)	460×720	580×860	680×980	850×1100	950×1250
Maximum feeding size (mm)	425	500	630	750	900
Range of discharging port (mm)	45-100	50-150	75-175	100-200	125-225
Handling capacity(t/h)	50-120	60-210	110-330	230-450	280-750
Power (kw)	6p 55	8p 75	8p 110	6p 132	8p 160
Width × Length × Height (mm)	1566 × 1965 × 1630	1722 × 1943 × 1810	1960 × 2470 × 2180	2381 × 2775 × 2500	2600 × 3320 × 3120





# PE Jaw Crusher PERFORMANCE

## Unique Flywheel Design

Running stably with effectively reduced vibration.

## Large Crushing Ratio

low suspension motion mechanism leads to greater crushing ratio.

## Easy To Maintain

Application of high wear-resisting toothed plate, long maintenance period, and cost-saving.

## Low Failure Rate

Reliable performance, optimized design, the low failure rate.

# CJ SERIES OF EURO JAW CRUSHER

## PARAMETERS

Model	PE-250×400	PE-400×600	PE-600×900	PE-900×1200
Feed Opening Size(mm)	250×400	400×600	600×900	900×1200
Max.feeding size (mm)	210	340	500	750
Adjusting range of discharge opening(mm)	20-60	40-100	65-160	95-165
Processing capacity(t/h)	5-21	16-64	50-160	220-380
Motor power(kw)	6p 15	6p 30	6p 55	8p 110
Dimensions (L×W×H) (mm)	1300 × 1090 × 1270	1730 × 1730 × 1630	2190 × 2206 × 2300	3380 × 2870 × 3330

# WOTETRACK

## JAW CRUSHER STATION PERFORMANCE



- I . Feeding guard adopts hierarchical type with two layers structure which provides prerequisites for widening.
- II . It adopts ship form steel structure and low vehicle chassis with light weight.
- III. Feeding guard is lifted by hydraulic pressure, easy to be loaded and unloaded, conveniently and reliably to be fixed.

- Adapt to harsh conditions
- The material can directly reach the granularity of the final product



# WOTETRACK JAW CRUSHER STATION

## PARAMETERS

Model		HD72 (57)	HD86 (69)	HD86 (69)
Dimensions of Transmission Devices	Length	14200mm	14900mm	15200mm
	Width	2900mm	3000mm	3200mm
	Height	3470mm	3600mm	3700mm
	Weight	38t	50t	65t
Model		CJ96	CJ106	CJ120
Crusher	Inlet Dimensions	930×580mm	1060×700mm	1200×870mm
	Max.Feeding Size	480mm	560mm	700mm

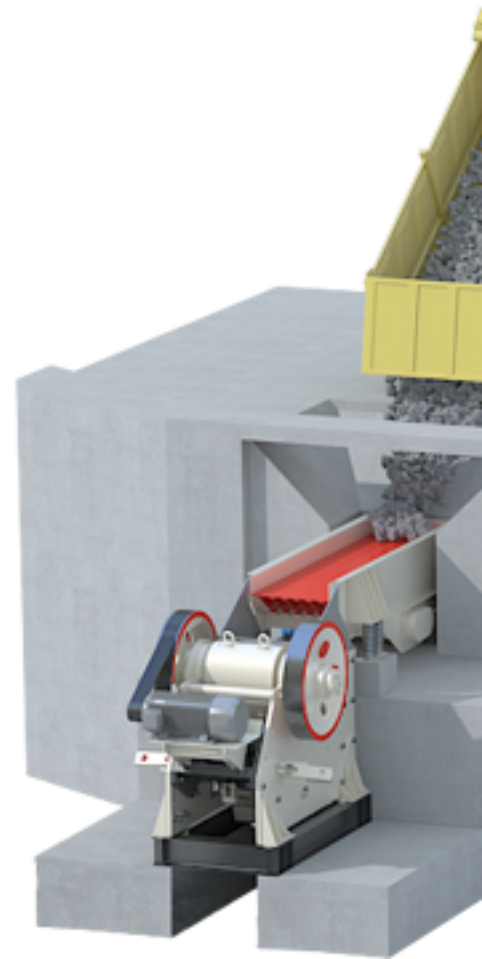
A 3D cutaway diagram showing a jaw crusher installed in a concrete foundation. A yellow dump truck is shown at the top left, dumping material into the crusher's hopper. The crusher's internal mechanism, including the toggle plate and discharge door, is visible. The entire unit is mounted on a concrete base.

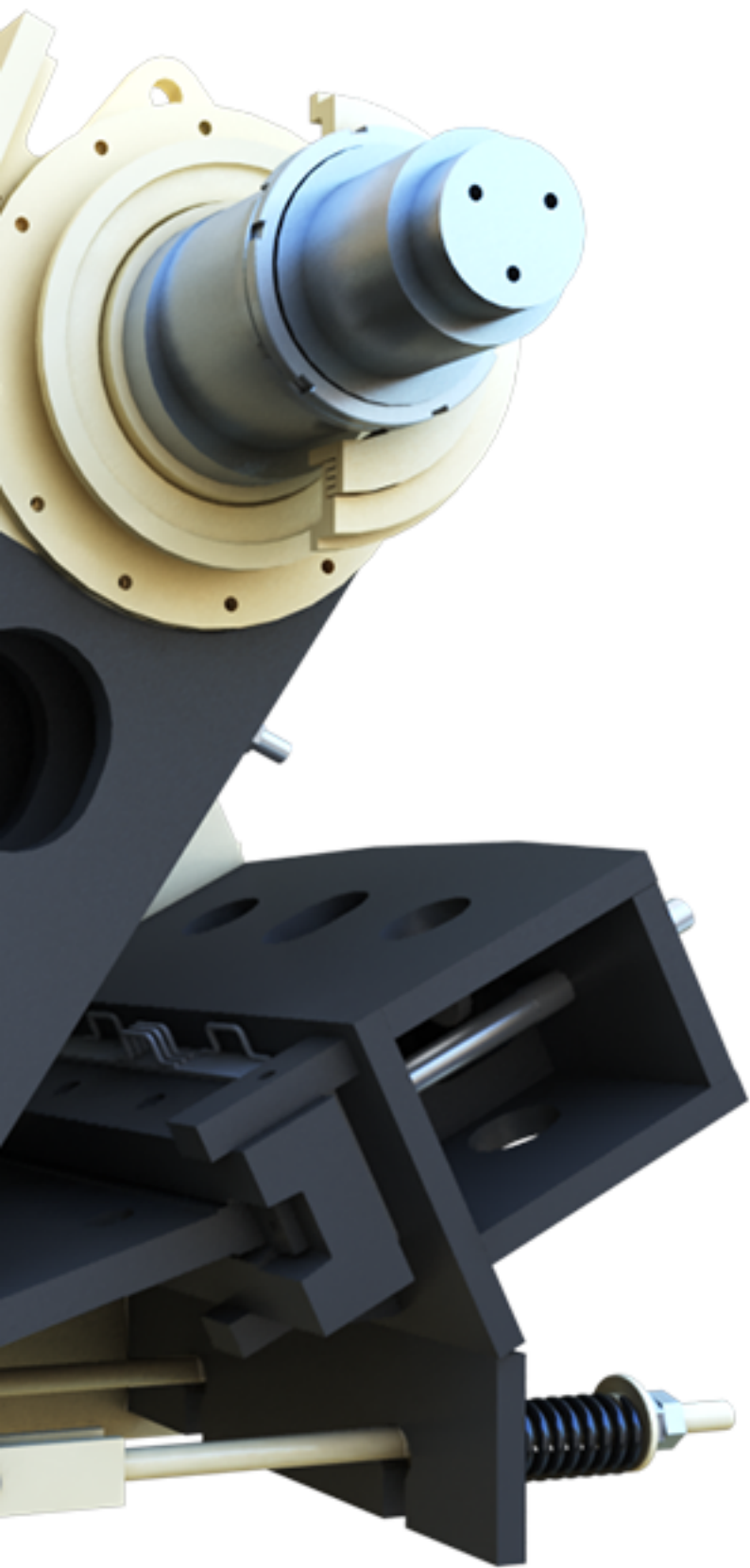
## INSTALLATION

# JAW CRUSHER

**The equipment is provided after assembly and required to be checked as soon as you receive the product in order to avoid possible troubles during transportation.**

- ① It is suggested to install the equipment on concrete base to decrease vibration, noise and absorption of shock and avoid impact on building base. Fill ironwood, rubber belt or other buffer materials as cushion materials.
- ② Weight of base can be determined as 5-10 times of that of equipment and the depth of base shall be more than that of local frozen earth. Refer to the foundation drawing for locations of installing equipment and foundation bolt.
- ③ Before adjusting discharge door, release stretched spring, and then adjust spring in order to prevent drop of toggle plate.

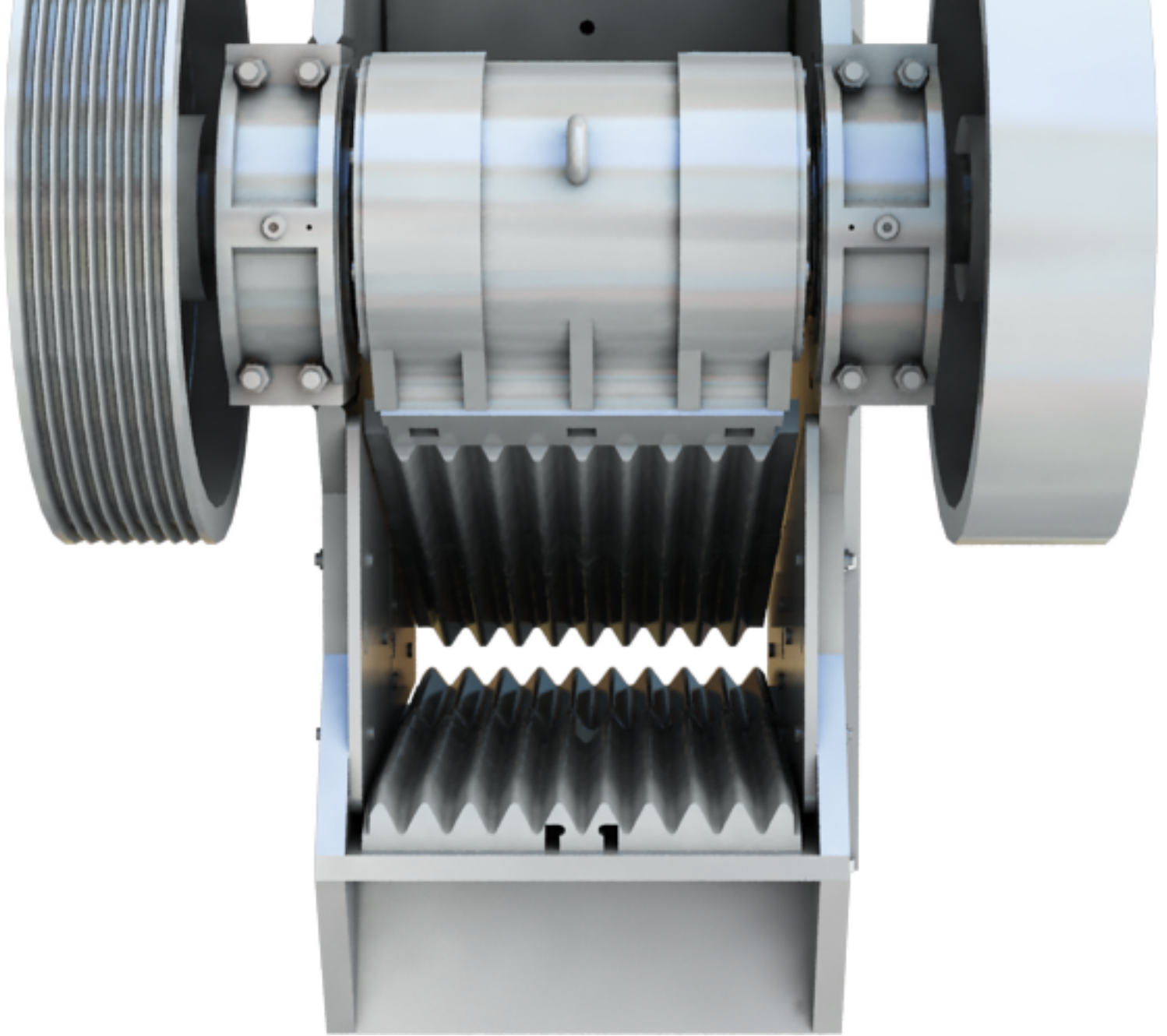




## PREPARATIONS BEFORE START

- ① Check lubrication of bearings and guarantee adequate lubricant inside bearings and on joint of toggle plate.
- ② Check carefully all tightness.
- ③ Change the abraded belt and clean the oil stain on belt and belt pulley with clean duster cloth.
- ④ Check protection device, and eliminate unsecured phenomena.
- ⑤ Clean ore or other things out of the crushing chamber.





## START A CRUSHER

- ① Start under normal driving conditions.
- ② Start only under no load.
- ③ Stop and get rid of hidden trouble when an abnormal thing occurs.

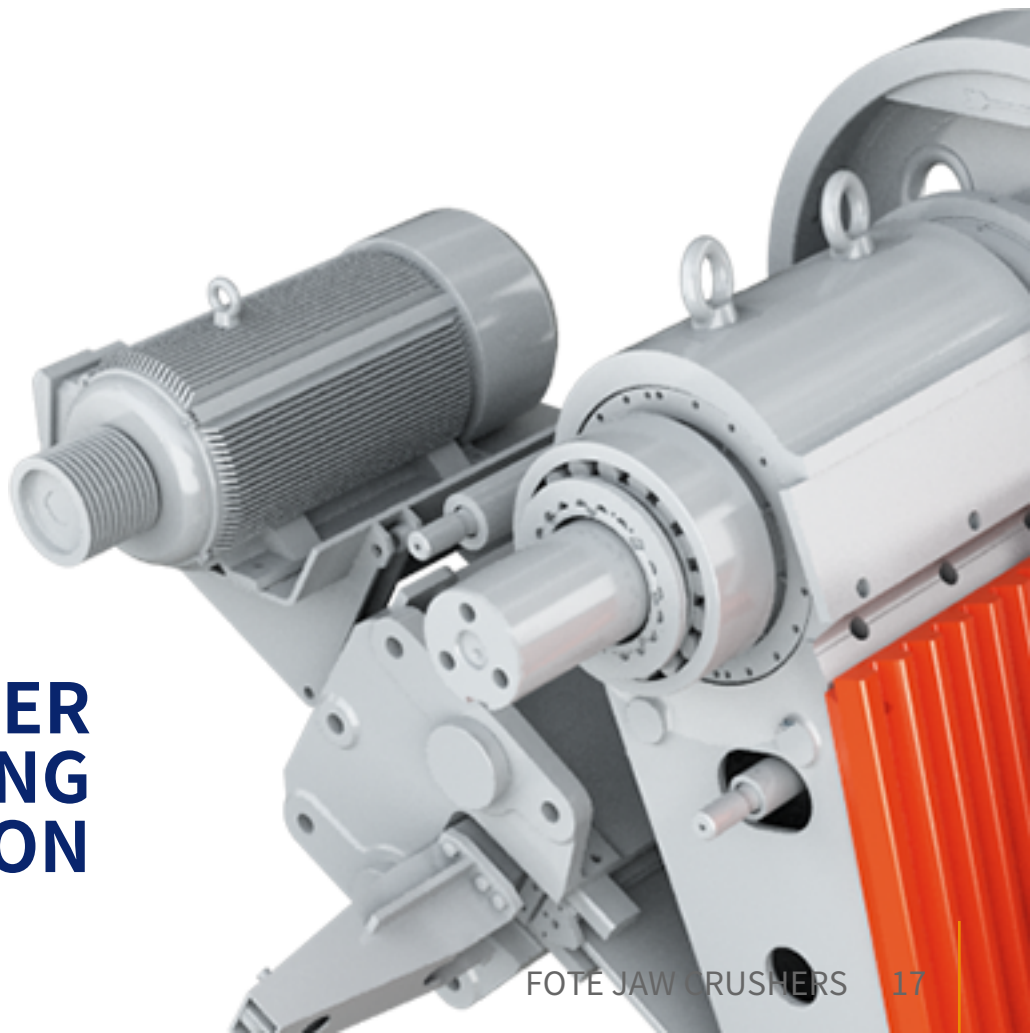


## MAINTENANCE AND USAGE

- ① Feed the equipment evenly.
- ② Prevent side load or side weight from increasing.
- ③ Generally, temperature rising shall not exceed 35°C and maximum temperature shall not exceed 70°C, or stop the machine and get rid of the trouble.
- ④ Stop feeding before stopping equipment, and cut motor after completely discharging materials in chamber.
- ⑤ Cut motor immediately when equipment is stopped by materials blocked and restart the equipment after completely discharging materials in chamber.
- ⑥ Change the abraded end for the other end.

- ① Guarantee friction surface lubricated in order to keep normal running and prolong service life of equipment.
- ② Calcium grease, sodium grease and calcium sodium grease can be applied to the equipment in terms of application location and temperature. Bearing should be added 50g 3#lithium grease every day.
- ③ The added lubricant is 50-70% volume of bearing pedestal and shall be changed every three months. Clean track of bearing roller by clean gas or coal oil when changing lubricant.
- ④ When toggle plate contacts the plate gasket, lubricant shall be added before starting equipment.

## JAW CRUSHER BEARING LUBRICATION





WE ARE THE CHOICE  
OF MORE THAN  
**200,000 CUSTOMERS FROM**  
**120 COUNTRIES**



Email: [contact@sinoftm.com](mailto:contact@sinoftm.com)  
Website: [www.ftmmachinery.com](http://www.ftmmachinery.com)